



# MURRAY

## ENGINEERING



## AN AUSTRALIAN MINING SERVICES PROVIDER WITH A GLOBAL FOOTPRINT

- ELECTRICAL
- MECHANICAL
- AUTOMATION AND CONTROL SYSTEMS
- FABRICATION
- PUMPING
- PRODUCT & EQUIPMENT HIRE/SALES
- LABOUR HIRE



# VISION AND VALUES

**Our vision is to grow the Murray Engineering group to be the global solutions provider of choice to the mining and associated industries.**

**We endorse these values:**

- **Safety above all else**
- **Quality to create economic value for our shareholders and clients**
- **Embrace change without compromising integrity**
- **Elimination of waste to reduce cost**
- **Respect and humility to generate customer preference**





# WHO ARE WE?

Murray Engineering Group has a highly skilled and experienced personnel complement approximating 410 employees specialising in the maintenance, refurbishment, automation, manufacture and assembly of a wide range of equipment. Our headquarters are based at a modern, purpose built 55,000m<sup>2</sup> facility in Pinjarra, Western Australia, with other branches located in Kalgoorlie, Newcastle, Roxby Downs and Mount Isa, and diverse projects based worldwide.

Murray Engineering Group has grown every year since its inception in 2007 and currently generates revenue in excess of \$100 million per annum. The Group has attained leadership in the automation and control of a wide range of machines utilizing 3 D scanning and WIFI for autonomous control at minimal latency.

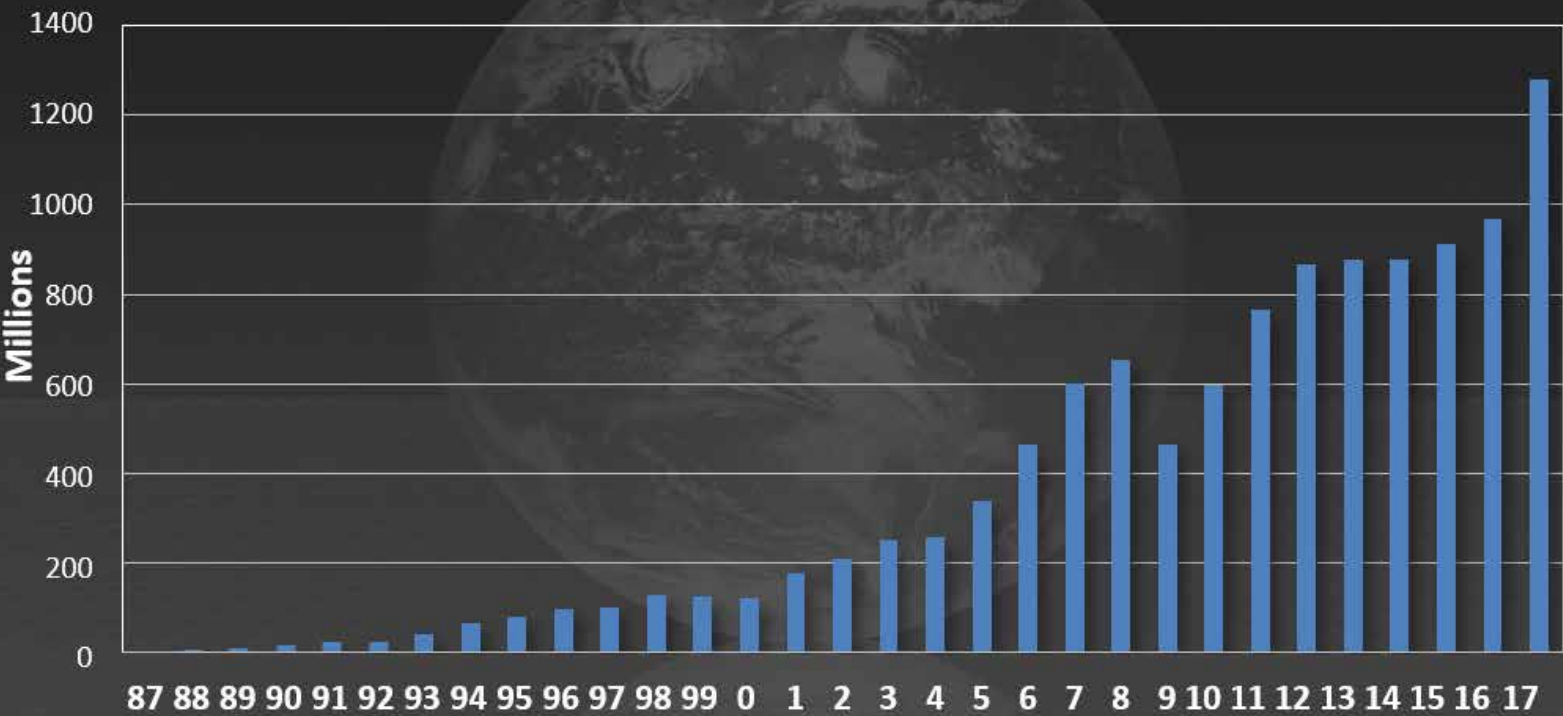
The electrical division designs and manufactures a full suite of panels, substations, motor control centres and switch rooms plus installs and maintains these in the field. The rental of underground mobile machines coupled to a full maintenance contract delivered according to strict KPIs has been undertaken since 2013. The pumping division supplies a range of pumps, accessories and motorizes all makes, builds pumping stations and repairs and maintains all types of pumps. The company has achieved an extremely high level of service - reflected in our growing list of satisfied clients, which includes leading companies from an array of industry sectors.

As would be expected in dealing with a leading Group, Murray Engineering is certified to ISO and ASNZS standards across all its areas of expertise.

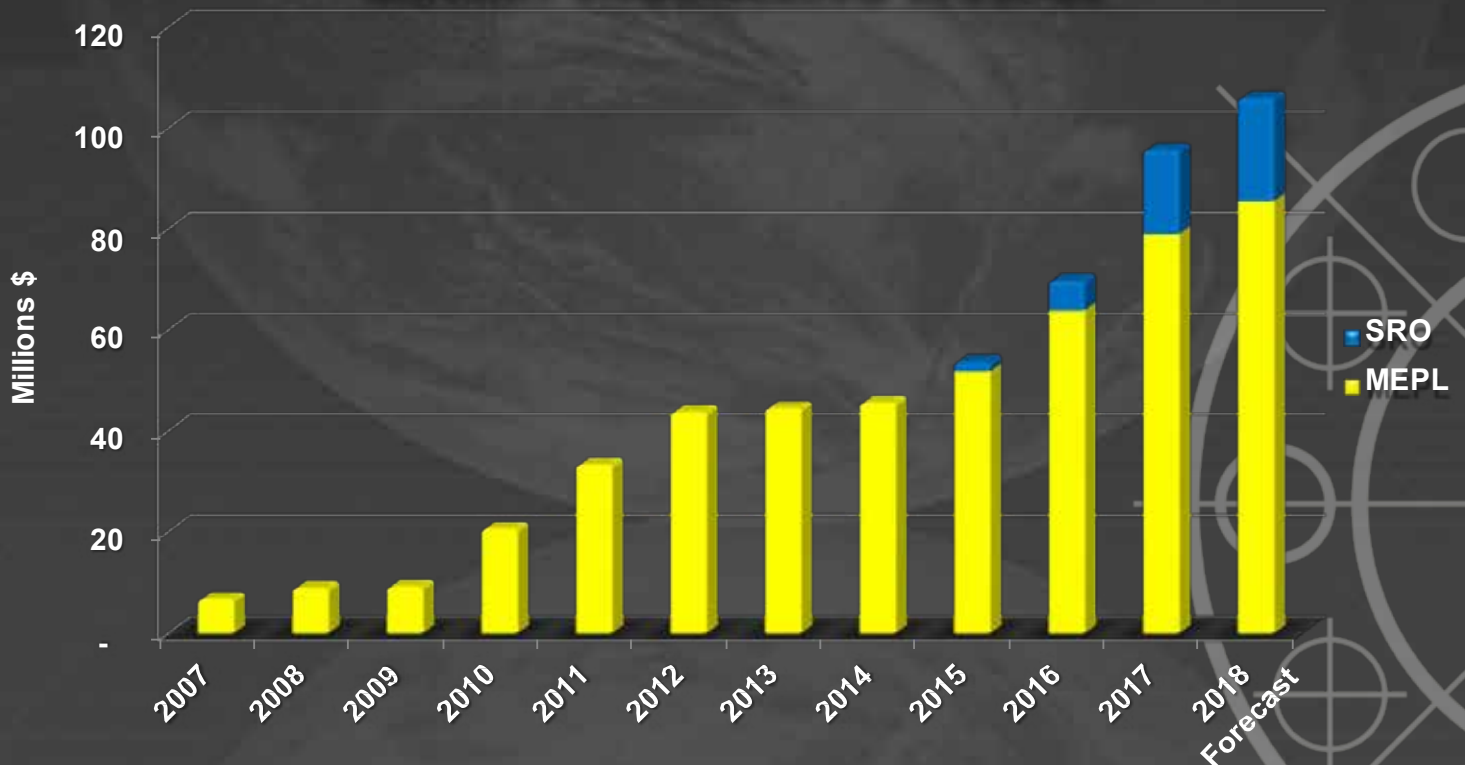


# HOW HAS THE GROUP GROWN?

## GROUP REVENUE



## MURRAY ENGINEERING REVENUE





# WHERE ARE WE?

## OUR HEADQUARTERS IN PINJARRA, WA



## OUR BRANCH IN NEWCASTLE, NSW





# WHERE ARE WE?

## OUR BRANCH IN KALGOORLIE, WA



## OUR BRANCH IN MOUNT ISA, QLD



# WHO ARE WE?

## OUR BRANCH IN ROXBY DOWNS, SA

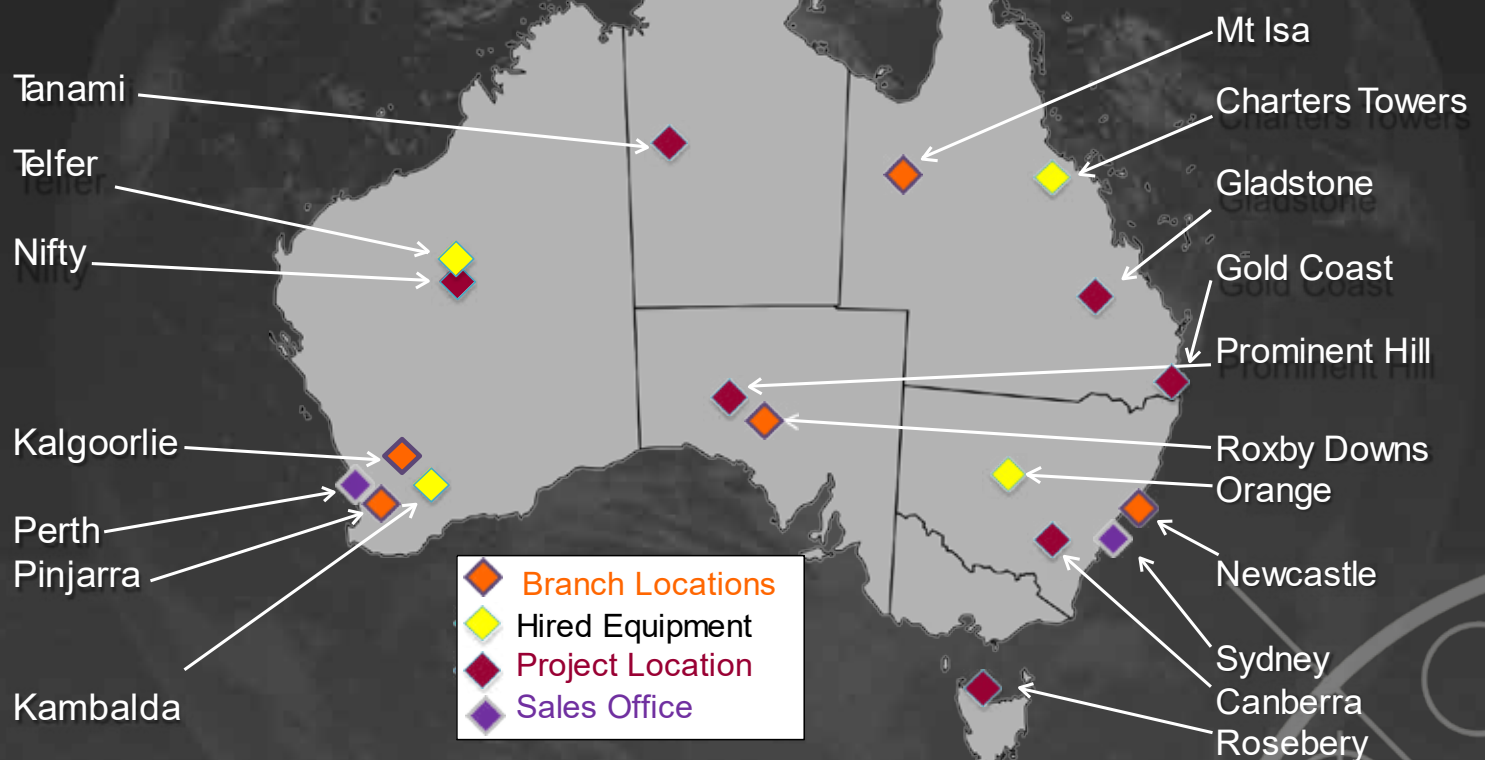


## MURRAY MINING SERVICES MONGOLIA





# OUR BUSINESS IN AUSTRALIA





# OUR BUSINESS INTERNATIONALLY



AUSTRALIA  
BRUNEI  
BURKINA FASO  
CHINA  
CONGO  
GHANA

INDONESIA  
IRELAND  
KAZAKHSTAN  
MALI  
MONGOLIA

NEW ZEALAND  
PAPUA NEW GUINEA  
PHILIPPINES  
SAUDI ARABIA  
SOUTH AFRICA  
TANZANIA

# SAFETY AND TRAINING

Murray Engineering is committed to providing a safe and healthy workplace for all employees, contractors and visitors.

Quality Management System accredited to ISO 9001

Safety accredited to AS4801 and ISO 18001

Environmental accreditation to ISO 14001

Steelwork Compliance Australia

LTI Free for past 8 years

Training Centre with RTO Accreditation

Apprentices close to 14% of Workforce





# DIVERSIFICATION IS OUR CORE COMPETENCY

PRODUCTS  
& HIRE



ELECTRICAL



AUTOMATION  
AND  
CONTROL  
SYSTEMS



PUMPING



# PRODUCTS

- Used and Rebuilt Machine Sales
- Diesel Particulate Filters
- Component Service Exchange
- Certified Machine Attachments
- Water-Trucks and Service Trucks





# EQUIPMENT HIRE

## Full Range of Underground Machines

- Drills
- Loaders
- Dump Trucks
- Integrated Tool Carriers
- Agitator Trucks
- Light Vehicles
- Plant Management System and Field Service
- Full MARC Option
- Guarantee Cost and Availability Option



# MECHANICAL

- Field Service
- MARC Contracts
- Machine Rebuilds
- Component Overhaul
- Auto Electrical & Air-con
- Motor Vehicle Repairs
- LV Mine-Spec





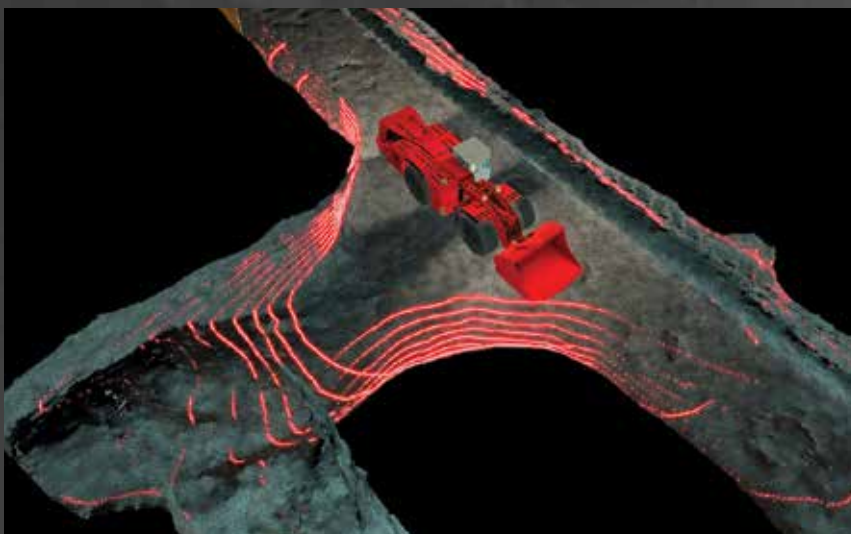
# FABRICATION

- Machine Attachments
- Fixed Plant Components
- Mobile Plant Implements
- Skid Bases
- Frames
- ACFM Crack Detection
- Handrails and Vandal Guards
- Mobile Welding Truck



# CONTROL SYSTEMS

- Automation and Guidance Solutions
- Tele-Remote Supply and Installation
- Line of Sight Remote Design and Installation
- Proximity Detection and Collision Avoidance
- 3D Scanning and Localization Systems
- Wireless Communication





# ELECTRICAL

**In-House from Concept to Completion**

**Murray Engineering can provide the following products and services:**

- Detailed Engineering Design
- Assembly of:
  - Motor Control Centres
  - Switchrooms
  - Switchboards
  - Substations
  - PLC, Distribution and Starter Panels
- Repairs to:
  - Trailing Cables
  - Electrical Components



# ELECTRICAL PROJECTS

- Electrical Cable Installation
- Electrical and Instrumentation
- Vertical Cable Installations
- Primary Fan Installations
- HV Terminations and Isolation





# PUMPING

We offer the following services for all of your requirements:

- Complete Engineering Design
- Fabrication
- Assembly
- Skid-Mounting
- Installation and Commissioning
- New Pump Supply
- Workshop and Field Repairs



# CONTACT US

## 1800 MURRAY

[sales@murrayengineering.com.au](mailto:sales@murrayengineering.com.au)

[www.murrayengineering.com.au](http://www.murrayengineering.com.au)

### HEAD OFFICE

54 Munday Avenue, Pinjarra WA 6208  
Ph: 08 9550 5800

### NEWCASTLE OFFICE BRANCH

431 Masonite Road, Heatherbrae NSW 2324  
Ph: 02 4953 2200

### KALGOORLIE OFFICE BRANCH

48 Kakarra Road, Kalgoorlie WA 6430  
Ph: 08 9088 0666

### MT ISA OFFICE BRANCH

4 Engineering Road, Mount Isa QLD 4825  
Ph: 07 4744 7454

### MURRAY MINING SERVICES MONGOLIA

City Centre #303, Sukhbaatar Square-5, 8th Khoroo, Sukhbaatar District, Ulaanbaatar-14200, MONGOLIA  
Ph: +976-9404 9016/ +976-9404 9006  
[info@murray.mn](mailto:info@murray.mn)

LICENCES: ECL008637 AU31857 MRB6164

